

Unitarian Universalist Church of Davis

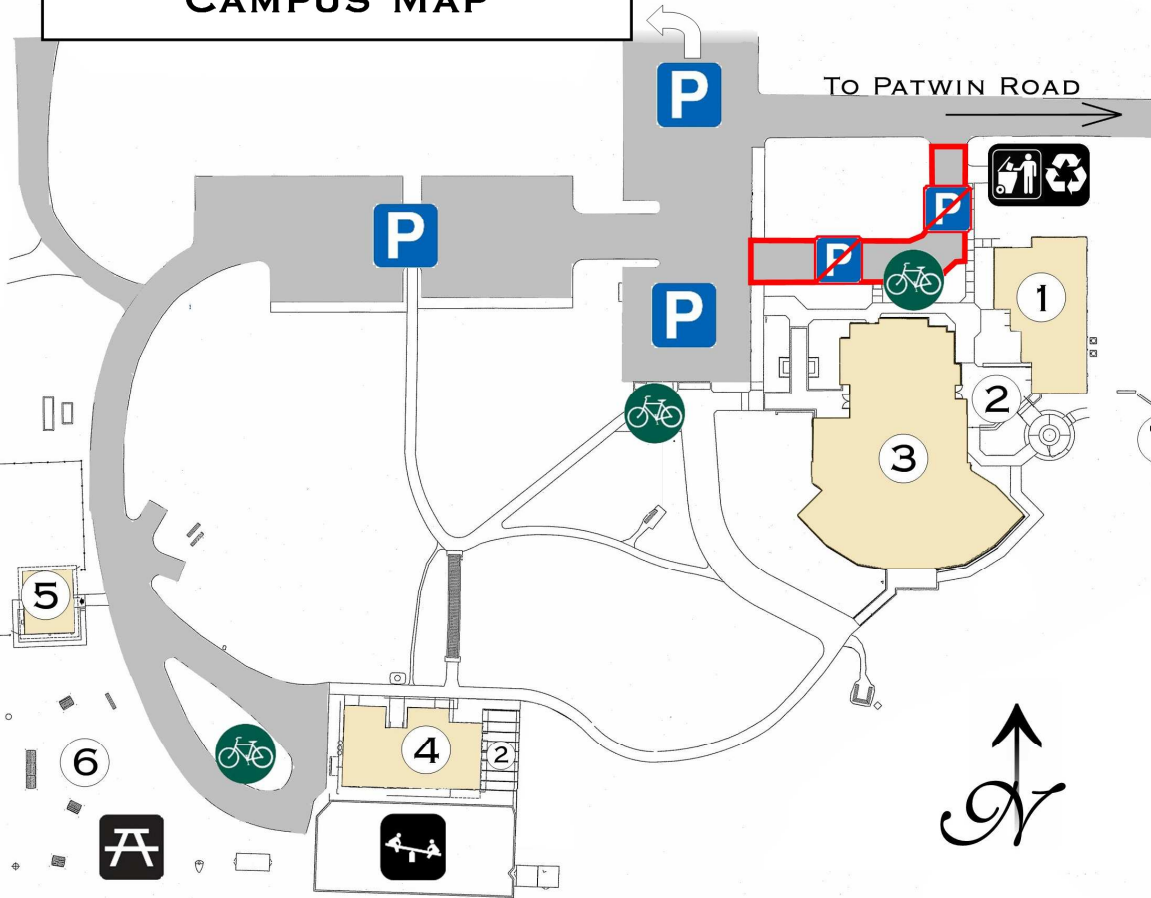
Fees

★ ½ price for Members & Pledging Friends (M&PF).

☆ Suggested Donation for M&PF's major life events

◆	Rental Space	Increment	Fee	Notes
	UUCD: All buildings/grounds	1 hour	\$500	★
	Library	1 hour	\$50	★
	Patio	1 hour	n/c	when renting Library/ Main Building
	Main Building: <i>Entire Building</i>	1 hour	\$300	★
	Main Building: <i>Sanctuary</i>	1 hour	\$100	★ Other rooms may be in use
	Main Building: <i>Social Hall</i>	1 hour	\$150	★ Other rooms may be in use
	Main Building: <i>Kitchen</i>	1 hour	\$100	★ Other rooms may be in use
	Main Building: <i>Meeting Room</i>	1 hour	\$25	★ Other rooms may be in use
	Bridgehouse	1 hour	\$50	★
	Cottage	1 hour	\$25	★
	Hedges' Grove	1 hour	n/c	when renting Cottage/Bridgehouse
◆	Rental Services: Reserve at least 10 days in advance	Increment	Fee	Notes: <u>subject to the availability of skilled individuals to fulfill requests.</u>
	<i>Event Assistant</i>	<i>1 hour</i>	\$25	Not currently available.
	<i>AV Equipment Operator</i>	<i>1st hour Additional Hours</i>	\$50 \$25/hr	Not currently available.
	Clean-up	1 hour	\$25	
	Set-up	1 event	\$25	Pre-set table/chair arrangements
	Set-back	1 event	\$25	Return furniture to default setting
◆	Professional Services	Increment	Fee	Notes
	Minister: Wedding	1 Wedding	\$500	☆ (+ Counseling Sessions, Rehearsal)
	Minister: Child Naming	1 hour	\$100	☆
	Minister: Memorial	1 Memorial Service	\$300	☆
	Minister: Interment	1 Interment	\$125	☆
	Musician (may vary by musician)	1 hour	Starting at \$150	\$25+ for rehearsal Exact fee negotiated between Renter & Musician.
	Mileage (all off-site events)	Per mile	\$0.575	Set by IRS, 2015
	Order of Service Printed	Per imprint		Members Only: first 2 pages free
◆	Deposits	Fee	Notes	
	Reservation	25% of total	Due when reservation is made; non-refundable.	
	Cleaning/Key	\$100	Refundable.	
	Damage	\$500	Applied to rentals of Social Hall. Refundable.	

U.U. CHURCH OF DAVIS CAMPUS MAP



LEGEND

1. LIBRARY/OFFICE BUILDING
2. PATIO
3. MAIN BUILDING
4. BRIDGEHOUSE
5. COTTAGE
6. HEDGES GROVE
7. MEMORIAL WALL

P CAR PARKING

⌘ PICNIC TABLES

⌘ PLAYGROUND

🚲 BIKE PARKING

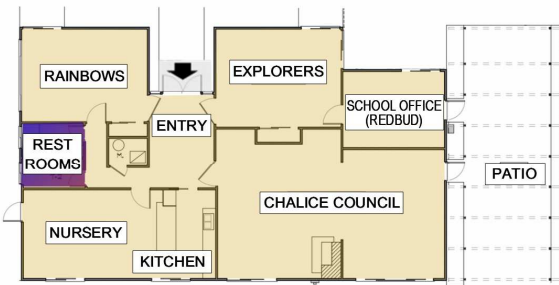
♻️ CORRAL (GARBAGE AND RECYCLING BINS)

🚻 RESTROOMS

— FIRE LANE - NO PARKING

BUILDING DETAIL

4. BRIDGEHOUSE

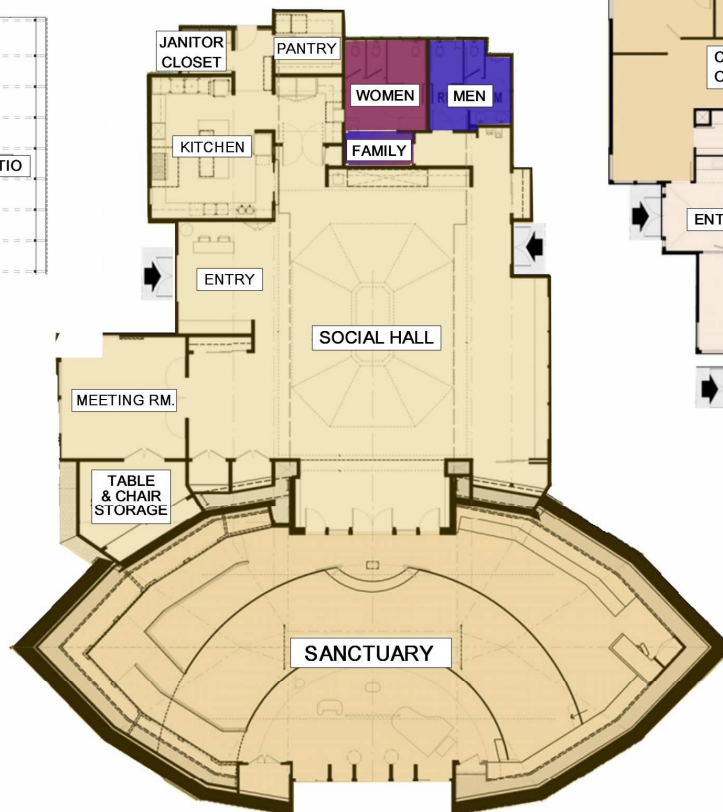


PLAYGROUND

5. COTTAGE



3. MAIN BUILDING



1. LIBRARY/OFFICE BUILDING

